

Economy Adjustable Clamping Levers
metric

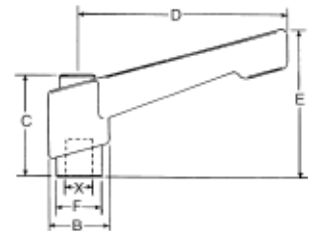
- ▶ Internal thread
- ▶ Excellent pricing...quality low cost solution
- ▶ Handle made from glass-fiber reinforced polyamide
- ▶ Bushing made from zinc-plated steel
- ▶ Resistant to oils, solvents, and other chemicals



LIFT AND ROTATE
HANDLE 360°



PART #	X Thread	Thread Depth	B	C	D	E	F
AH-911	M4 x .7	7.5mm	16mm	26.5mm	30mm	32.4mm	12mm
AH-912	M5 x .8	7.5	16	26.5	30	32.4	12
AH-913	M6 x 1.0	7.5	16	26.5	30	32.4	12
AH-901	M4 x .7	7.5	16	26.5	42	35	12
AH-902	M5 x .8	7.5	16	26.5	42	35	12
AH-903	M6 x 1.0	7.5	16	26.5	42	35	12
AH-904	M6 x 1.0	11.5	20	36	65	50	15
AH-905	M8 x 1.25	11.5	20	36	65	50	15
AH-906	M8 x 1.25	14	25	46	80	63	20
AH-907	M10 x 1.50	14	25	46	80	63	20
AH-908	M12 x 1.75	14	25	46	80	63	20



- ▶ Zinc-plated steel stud
- ▶ Excellent pricing...quality low cost solution
- ▶ Handle made from glass-fiber reinforced polyamide
- ▶ Resistant to oils, solvents, and other chemicals

Economy Adjustable Clamping Levers
metric with stud



LIFT AND ROTATE
HANDLE 360°



PART #	X Thread	L	B	C	D	E	F
AH-949	M4 x .7	10mm	16mm	26.5mm	30mm	32.4mm	12mm
AH-940	M5 x .8	10	16	26.5	30	32.4	12
AH-941	M5 x .8	20	16	26.5	30	32.4	12
AH-943	M6 x 1.0	10	16	26.5	30	32.4	12
AH-944	M6 x 1.0	15	16	26.5	30	32.4	12
AH-945	M6 x 1.0	20	16	26.5	30	32.4	12
AH-919	M4 x .7	10	16	26.5	42	35	12
AH-920	M5 x .8	10	16	26.5	42	35	12
AH-921	M5 x .8	20	16	26.5	42	35	12
AH-922	M5 x .8	30	16	26.5	42	35	12
AH-923	M6 x 1.0	10	16	26.5	42	35	12
AH-924	M6 x 1.0	15	16	26.5	42	35	12
AH-925	M6 x 1.0	20	16	26.5	42	35	12
AH-926	M6 x 1.0	25	16	26.5	42	35	12
AH-927	M6 x 1.0	30	16	26.5	42	35	12
AH-928	M8 x 1.25	15	20	36	65	50	15
AH-929	M8 x 1.25	20	20	36	65	50	15
AH-930	M8 x 1.25	25	20	36	65	50	15
AH-931	M8 x 1.25	30	20	36	65	50	15
AH-932	M8 x 1.25	40	20	36	65	50	15
AH-933	M10 x 1.50	20	25	46	80	63	20
AH-934	M10 x 1.50	30	25	46	80	63	20
AH-935	M10 x 1.50	40	25	46	80	63	20
AH-936	M10 x 1.50	50	25	46	80	63	20
AH-937	M12 x 1.75	30	25	46	80	63	20
AH-938	M12 x 1.75	40	25	46	80	63	20
AH-939	M12 x 1.75	50	25	46	80	63	20

